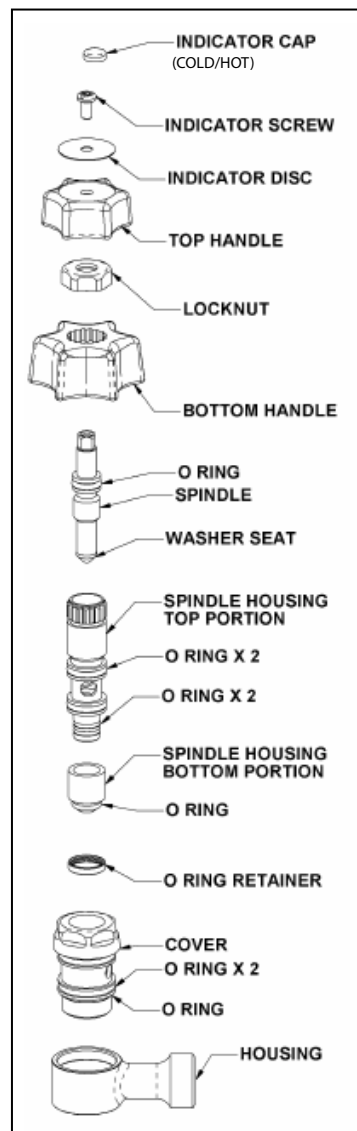
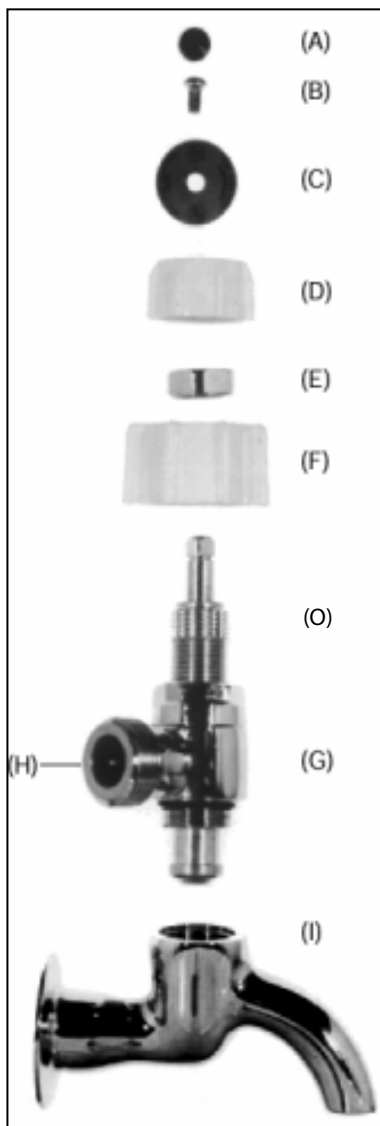


# Instructions for fitting Kowhai 258 Laundry Conversion Tap to an existing tap\*

\* Suitable only for 15mm (1/2") taps

## Installation Instructions

- 1) Turn off main water supply.
- 2) Remove Headworks from existing Laundry Tap.
- 3) Screw assembly (G) into existing tap body and tighten with spanner making sure that stem (O) is fully wound away from tap seat in an anti-clockwise direction.
- 4) Align part (H) in direction required to connect to hose from washing machine.
- 5) Place bottom hand control (F) onto assembly (G) and tighten lock nut (E) on with spanner.
- 6) Place the hand control (D) onto the spindle and then disc (C).
- 7) Fit indicator screw (B) with screw driver then push on indicator cap (A), red on hot and blue on cold.
- 8) Connect hoses, close taps and turn on water supply.



Methven warrants this product against manufacturing defects and that it is suitable for use under the general operating conditions specified in this instruction sheet. However, regional regulations apply and may affect your warranty. Please refer to [www.methven.com](http://www.methven.com) or call customer service for full details.

**METHVEN**

METHVEN LIMITED  
 41 Jomac Place, Avondale  
 Auckland 1026, New Zealand  
 Phone : 0800 804 222